



Aluminium

Garden Edging & Paving Restraint - Data Specification



Hedge Garden Edging

Straight Lines & Curves



Hedge Garden Edging

Scope

Aluminium alloy 6063 is a medium strength alloy commonly referred to as an architectural alloy. It has good surface finish, high corrosion resistance, is readily suited to welding and can be easily anodised

Alloy	Forms	Characteristics / Properties	Applications
EN – AW 6063	<ul style="list-style-type: none"> Extruded square, round, hollow sections 	<ul style="list-style-type: none"> High corrosion resistance Medium strength Complex sections Anodising quality 	Architectural sections, frames, lightings, railings, ladders, furniture, fences, garden edging.

Alloy	Temper s	Temper Designation (EN 515)
EN – AW 6063	0	Annealed wrought alloys
	T4	Solution heat treated & natural aged
	T5	Cooled from an elevated temperature forming operation & artificially aged (precipitation hardened)
	T6	Solution heat treated & artificially aged (precipitation hardened) Press quenching required
	T64	Solution heat treated & artificially aged (precipitation hardened) Under aged to improve formability (bending temper)
	T66	Cooled form an elevated temperature forming operation & artificially aged (precipitation hardened) to a higher level of mechanical properties through special control of manufacturing processes. Press quenching required.

Chemical composition according to EN573-3 (EN – AW %)

Alloy	Si	FE	Cu	Mn	Mg	Cr	Zn	Ti	Others		Al
									Each	Total	
6063	0.20-0.60	0.35	010	0.10	0.45-0.90	0.10	0.10	0.10	0.05	0.15	Rest

Mechanical properties according to EN755-2 (Extruded profiles)

Temper	Wall Thickness mm	Tensile Strength Rm Mpa min	Proof stress Rpo.2 Mpa min	Elongation		Brinell Hardness HB**
				A50mm % min	A % min	
T4	0 - 25	130	65	12	14	45
T5	0 - 3	175	130	6	8	55
	3 - 25	160	110	5	7	50
T6	0 -10	215	170	6	8	65
	10 - 25	195	160	6	8	60

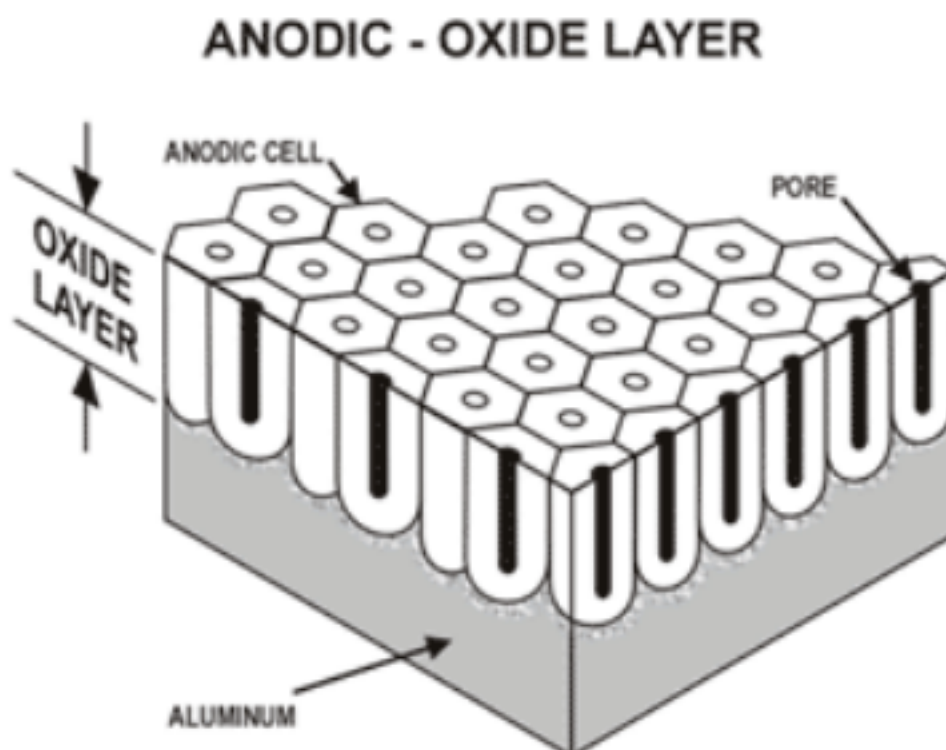
Hedge Garden Edging

Anodising

Hedge provide a durable 10um anodised surface treatment finish to all our garden edging products.

Alloy	Alloying Constituents	Metal Properties	Coating Properties	Uses	A.Q Types	Non A.Q Types
EN – AW 6063	<ul style="list-style-type: none">• Magnesium & Silicon	<ul style="list-style-type: none">• Strong• Ductile	<ul style="list-style-type: none">• Clear 10um• Good Protection• Resists Moisture	<ul style="list-style-type: none">• Architectural• Structural	<ul style="list-style-type: none">• 6063• 6463	<ul style="list-style-type: none">• 6061• 6101

Anodising Reference Guide



Hedge Garden Edging

Hedge exclusive range of anodised colours.

Why an anodised finish?

Garden edging is subject to a range of elements such as, mowing, weed trimmers & constant moisture in the ground.

Our experience as a landscaping company, using products such as, mill finish, powder coated aluminium or steel painted garden edging products.

- Mowing and weed trimming will damage the surface, exposing the metal to rust and corrosion.
- Powder coated colours will fade in a short period of time.
- Scratching of the painted surfaces usually occurs just in transit.
- When hardscape landscape materials such as stone or pavers are installed against the edge, they tend to chip and scratch easily exposing the metal to corrosion.

Anodising provides a durable, protective surface, preventing rot, rust & corrosion against the elements and allows installation in coastal areas and highly corrosive soil types.

Hedge products provide a superior long lasting finish for your residential & commercial landscape projects.



Clear



Charcoal



Rust

Hedge Garden Edging

Applications

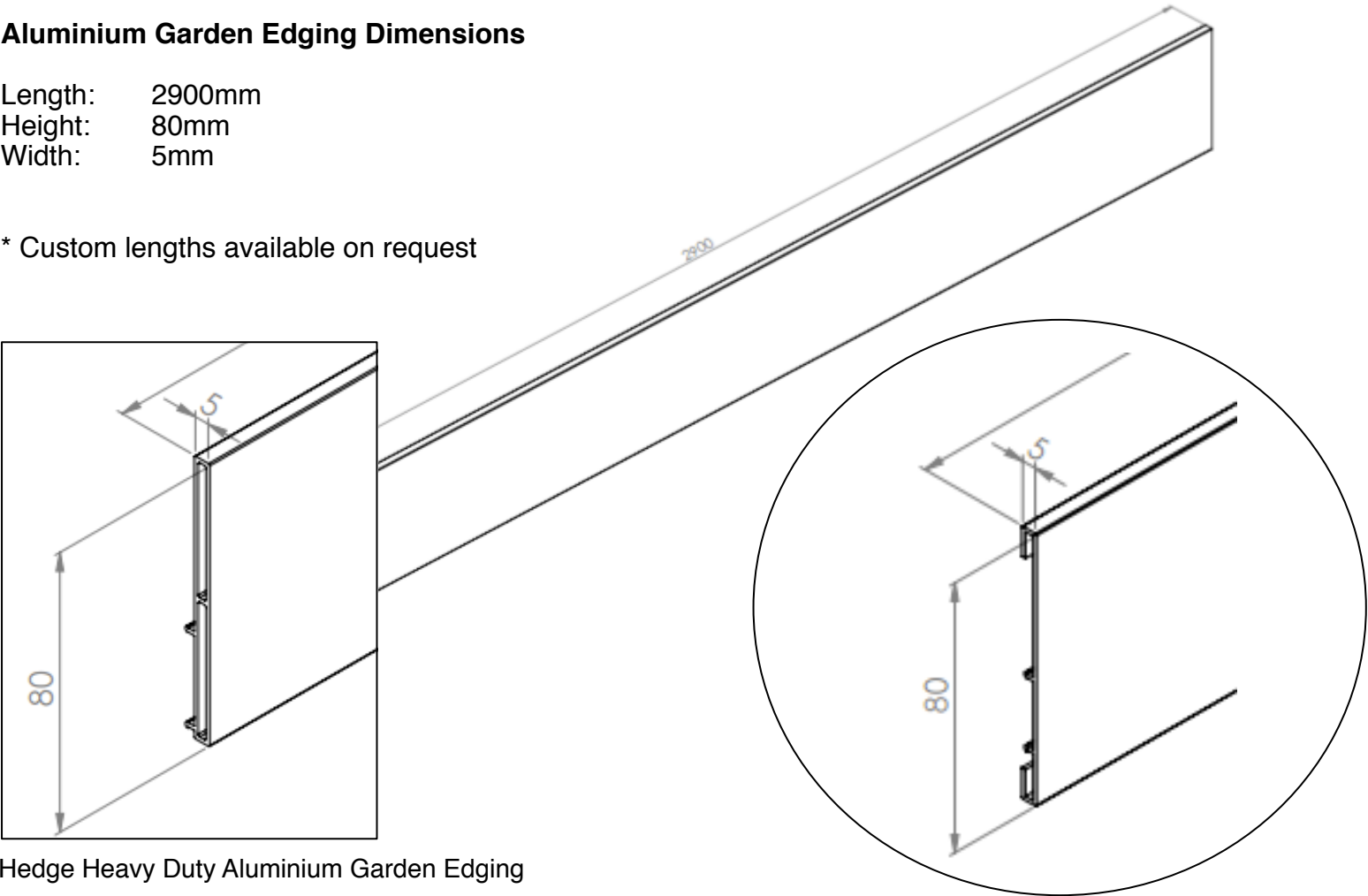
Where a division of materials is required.

Applications / Installation	Heavy Duty	Flexi Edge
Lawn / Artificial Grass	•	•
Raised Garden bed	•	•
Paths / Walkways / Driveways	•	•
Concrete / Asphalt	•	
Curves / Straight lines	•	•
Paving Restraint	•	
Expansion Joint	•	•
Above / Below Ground Installation	•	•

Aluminium Garden Edging Dimensions

Length: 2900mm
Height: 80mm
Width: 5mm

* Custom lengths available on request

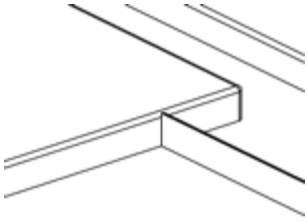


Hedge Heavy Duty Aluminium Garden Edging

Hedge Flexi Edge Aluminium Garden Edging

Hedge Garden Edging

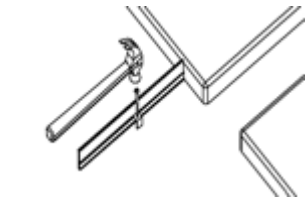
Installation Guide



1. Prepare

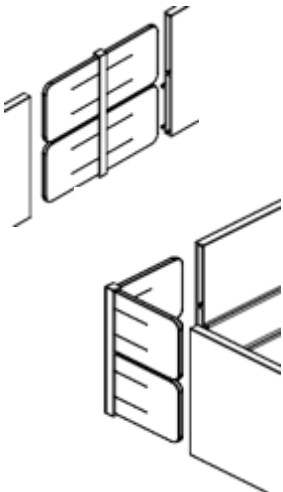
Place Hedge Aluminium Garden Edging into position. above or below ground installation

Curves & straight lines are easily achieved



2. Fixing

Install 1 Fixing Spike (HDE-004) & Spike Connector (HDE-005) approx. every 1m to achieve a firm installation.



3. Joining

Straight: Use Joiner (HDE-002) when joining Hedge Aluminium Garden Edging lengths together.

Corner: Use Joiner (HDE-003) when fixing Hedge Aluminium Garden Edging at right angles.

*Hedge provide a solution for every application

- 45 Degree Joiner (HDE-006)
- 3 way Tee (HDE-007)
- 4 Way Joiner (HDE-008)



4. Cutting

For best results, cut Hedge Aluminium Garden Edging using an electric drop saw.

*Metal cutting blade not required, standard wood blade is sufficient.

In the absence of an electric drop saw, a grinder with fine metal cutting disk or Hacksaw can be used. Remember to file edges clean after cutting to remove any burred edges.

5. Finish

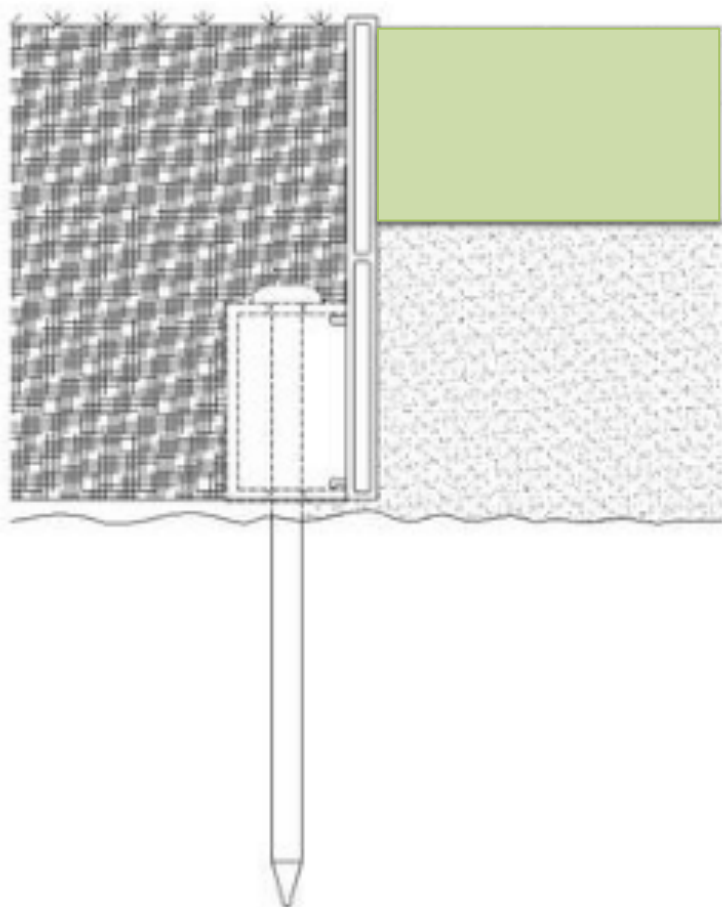
Once you have completed the installation of your Hedge Aluminium Garden Edging, simply backfill materials against your new garden edge to desired depth.

*Hedge Aluminium Garden Edging can be used on new or existing garden beds and landscape projects.



Hedge Garden Edging

Installation Guide



Lawn – Artificial Grass

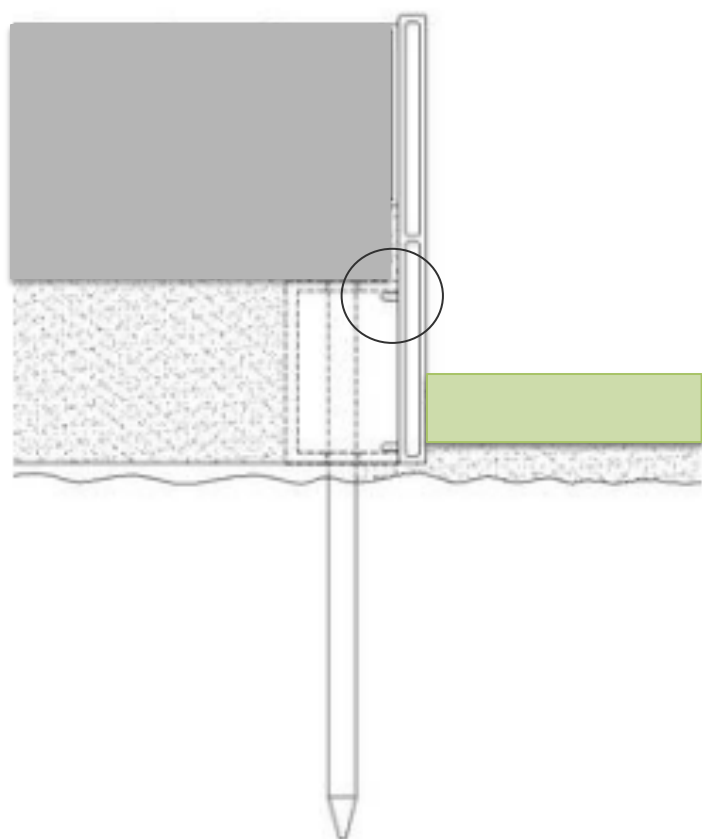
Hedge is ideal used as a lawn & Artificial Lawn edge.

Lawn Application: Simply place and secure Hedge Aluminium Garden Edging into position & level top soil approx. 30mm from top of edge.

When your lawn and soil settle you'll be left with a slight pronounced edge that you can run your weed trimmer along producing a professional result.

Artificial Grass Application: Simply place and secure Hedge Aluminium Garden Edging into position & level crusher dust approx. 25mm from top of edge. (depending on the height of your artificial underlay)

Hedge Aluminium Garden Edging provides a clean, modern finish to artificial lawns. Requires no concrete or stabilising.



Paving Restraint

Pavers provide a natural, warm look & feel to driveways, pool areas, paths and patios.

Finishing pavers is problematic, as concrete restraints can break away, resulting in pavers moving and base materials washing out. Leaving your paving project unsightly and in need of repair.

Hedge provides a very simple solution.

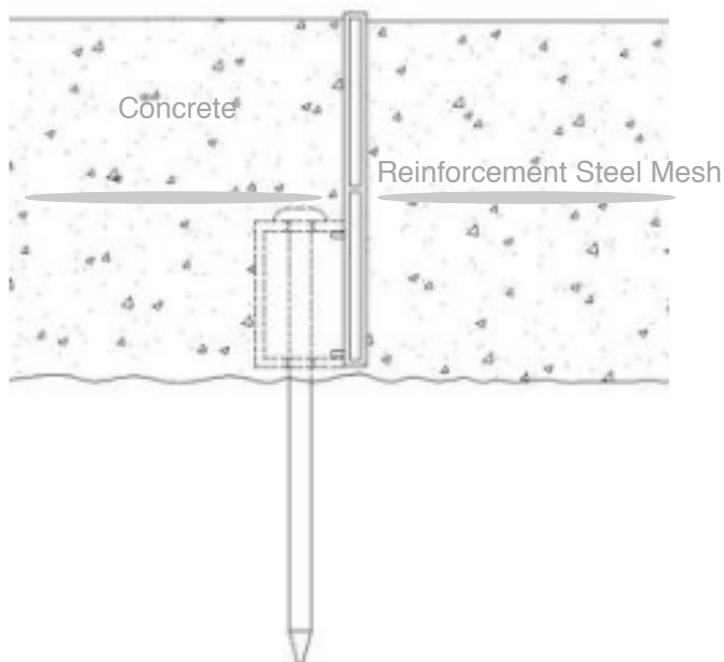
Installing Hedge Aluminium Garden Edging prior to laying base materials, will hold the paver firmly in position.

Utilise the top rail located at the rear of our garden edge which is 40mm below finished height to level your base materials. Then simply lay pavers firmly against Hedge Aluminium Garden Edge for a professional result.

A stunning way to finish off your new paving project.

Hedge Garden Edging

Installation Guide



5. Expansion Joint – Concrete

As a landscaper for more than 17 years, we can safely say that we can provide a quality finish when separating varying concrete surfaces or when hard surface change in materials.

Separating concrete surfaces is not always easy. Until now

Install Hedge Aluminium Garden Edging when forming up to pour your newly placed concrete. Simply leave Hedge Aluminium Garden Edging in position. It will later serve as an expansion joint or control joint. Then simply place materials against Hedge Aluminium Garden Edging

You now have a professional result and separation of materials.

Paths – Walkways – Driveways

Hedge makes light work of keeping landscape materials in and the lawn or garden out. The perfect edge restraint for Decorative Pebbles, Stones, Aggregates, Decomposed granite and bitumen.

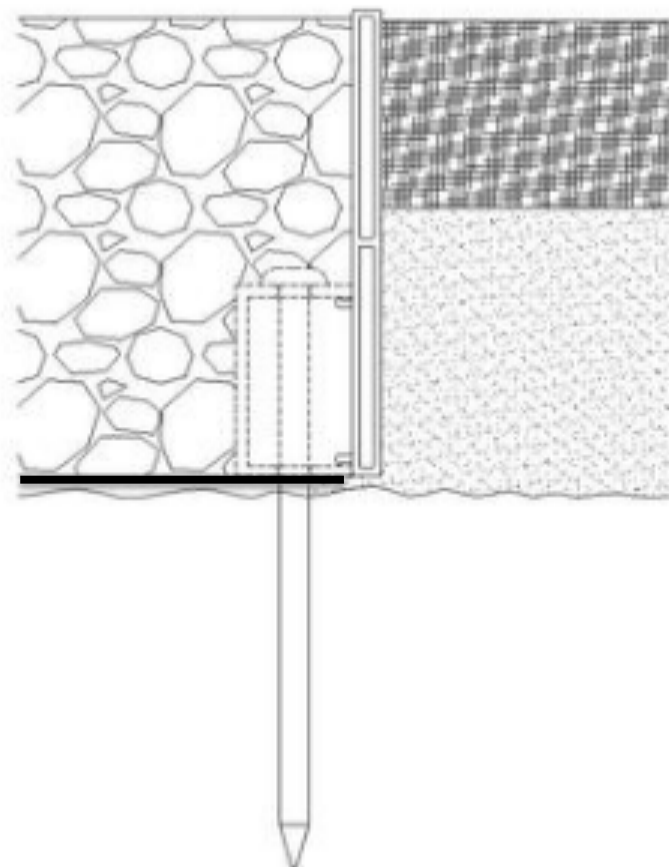
Firstly install Hedge Aluminium Garden Edging into position, according to your garden or landscape design.

Then backfill with your desired landscape materials.

Hedge Handy Tip: By placing geo fabric on the ground prior to placement of landscape materials for your paths, walkways & driveways. You will provide a barrier between the earth and your new decorative stone.

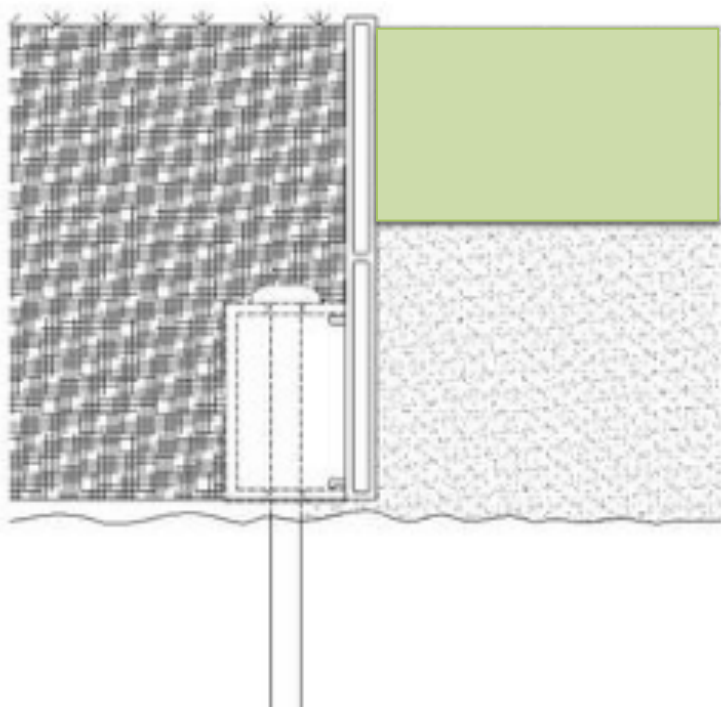
Why? So when it rains the earth will not wash up and contaminate through the stone.

*80gsm Geo Fabric



Hedge Garden Edging

Installation Guide



Mulch & Garden Beds

Hedge Aluminium Garden Edging provides a sleek finish to what used to be the worst part of a landscape.

Above or below ground, Hedge Aluminium Garden Edging provides a long lasting, quality finish to your garden & landscape design.

Hedge continue to make quality products. So you can add the finishing touches to your home. Saving you time & money.

Trade professionals around the world trust Hedge Aluminium Garden Edging to create award winning projects.



Hedge Garden Edging

Professional Results



Hedge Garden Edging

Our Practices

Passion

Hedge has long been associated with the landscape industry.

We have designed and delivered countless of landscape projects for home owners, spanning over 25-years.

Landscaping is our passion, you might say our life's work. We care about what we do and strongly believe that our products enhance peoples lives, homes and bring outdoor spaces to life.

Materials & Finishes

Hedge Aluminium Garden Edging is made from structural grade alloy. We anodise our products to ensure they are resistant to the elements.

Making Hedge aluminium garden edging the most durable garden edge available on the market. Suitable for all applications.

Quality

With over 25 years experience in the landscape industry and using countless products available on the market, we found that products simply didn't stand up to the job.

They either failed in a very short period of time, costing us time & money in repairs and replacement. We had to find a better way

We searched for quality products and couldn't find them, so we decided to manufacturer our own.

Country of Origin

Hedge products are manufactured in the People's Republic of China. Our suppliers are committed to safe working procedures ensuring safety, environmental & ethical standards are adhered to.

Safety

For your own protection, always use Personal Protective Equipment. At a minimum for installation of Hedge Aluminium Garden Edging, the following should be worn at all times.



Hearing Protection



Protective Gloves



Eye Protection



Products made by landscapers, for landscapers

Hedge Head Office

21/F The Phoenix Building
23 Luard Rd, Wan Chai
Hong Kong

✉ sales@hedge.net.au 🌐 www.hedge.net.au

S Hedgedesigner ☎ +852 9673 7145